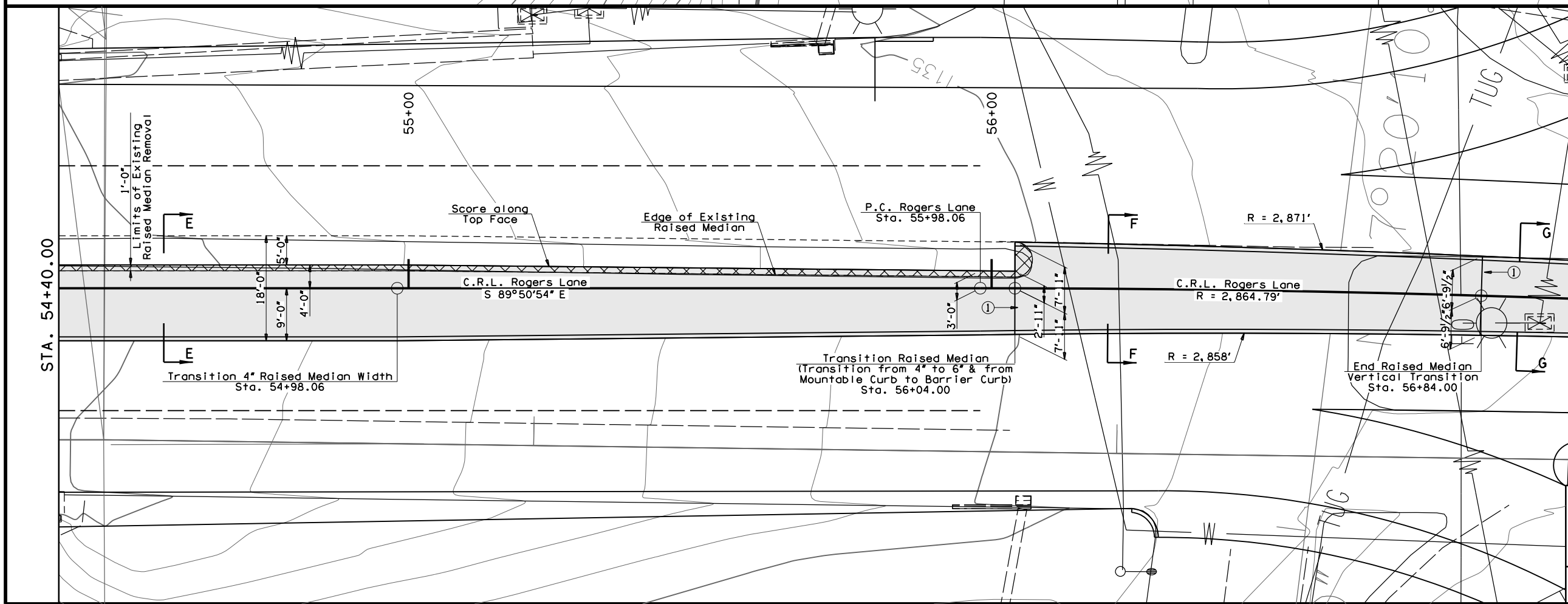
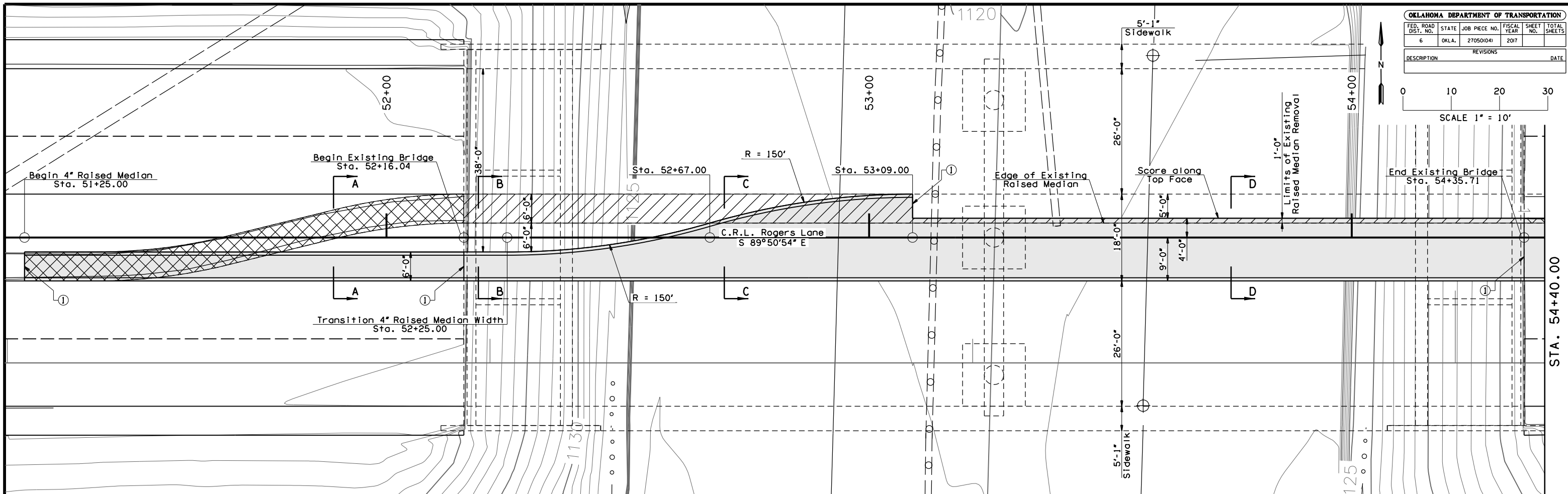
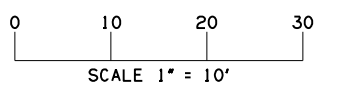


OKLAHOMA DEPARTMENT OF TRANSPORTATION					
FED. ROAD DIST. NO.	STATE	JOB PIECE NO.	FISCAL YEAR	SHEET NO.	TOTAL SHEETS
6	OKLA.	27050(04)	2017		
DESCRIPTION			REVISIONS	DATE	



- LEGEND:**
- Area to be Removed within Limits of Bridge
 - Area to be Removed outside Limits of Bridge
 - Proposed Raised Median

① Sawed & Sealed Construction Joints. Seal with Rapid Cure Joint Sealant. See Std. LECS-4.

- NOTES:**
- For Sections & notes, see Sheet No. 153.
 - For additional information, see Plan on Sheet Nos. 49 & 69.
 - Place Crack Control Joints at 20'-0" max. spacing in the Raised Median along the Bridge & Approach Roadway.
 - Seal all Longitudinal Joints between driving surface/proposed Raised Median & between existing/proposed Raised Medians with Rapid Cure Joint Sealant.

I-44 UNDER ROGERS LANE BRIDGE 'C'	COMANCHE COUNTY	DESIGN	BRT	9/16
		DETAIL	BRT	9/16
		CHECK	JCL	10/16
RAISED MEDIAN DETAILS (SHEET 1 OF 3)				GARVER